

Simcenter FLOEFD Extended Design Exploration module

to simulate fluid flow and heat transfer using 3D CAD models without the need for data translations or copies. Simcenter FLOEFD now offers the option of adding a powerful new design exploration and optimization engine through the Simcenter FLOEFD Extended Design Exploration module.

With the module, you can extend the Simcenter FLOEFD parametric study and design comparison functions to drive innovation through design exploration, moving beyond troubleshooting and evaluating designs to discovering better designs faster.

The efficient and robust optimization and search functionality of the HEEDS SHERPA algorithm embedded in Simcenter FLOEFD leverages multiple global and local search strategies and

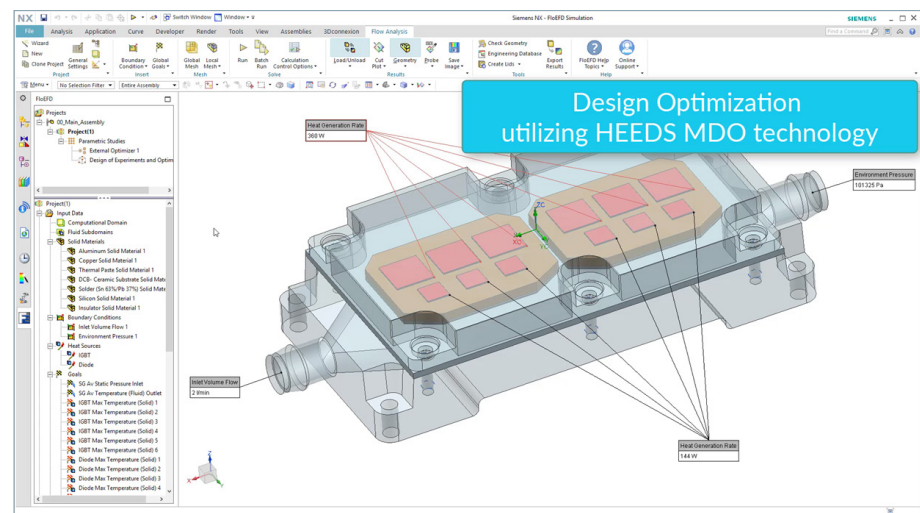
Benefits

- Expand CFD capabilities with design exploration and optimization
- Identify higher-performing families of designs
- Discover better designs faster
- Use simulation to drive innovation
- Minimize simulation time and cost

Features

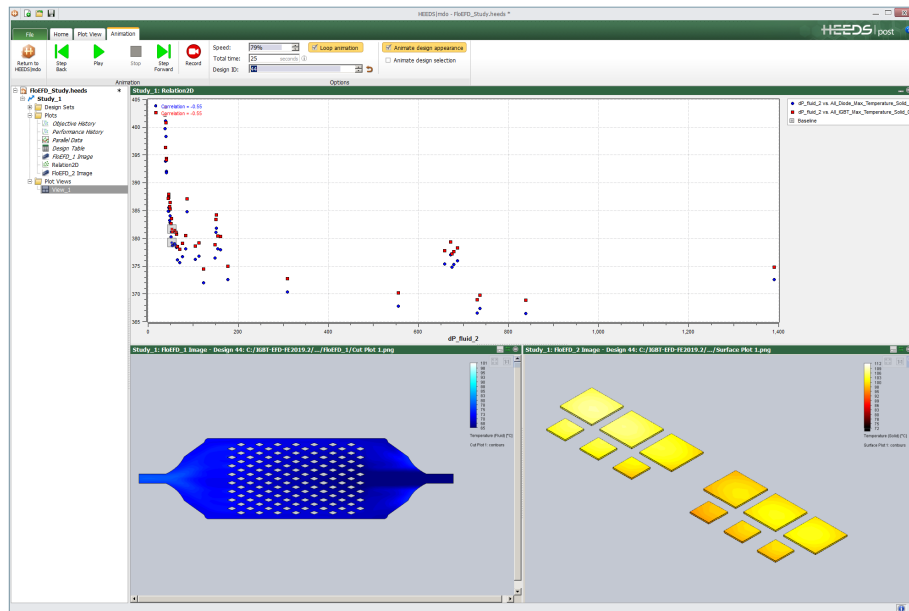
- Powerful design exploration engine embedded in Simcenter FLOEFD
- Robust optimization and search functionality using SHERPA algorithm
- Leverages multiple global and local search strategies
- Intelligent adaptive search

Simcenter™ FLOEFD™, the award-winning frontloading computational fluid dynamics (CFD) software from Siemens Digital Industries Software, works inside computer-aided design (CAD) software

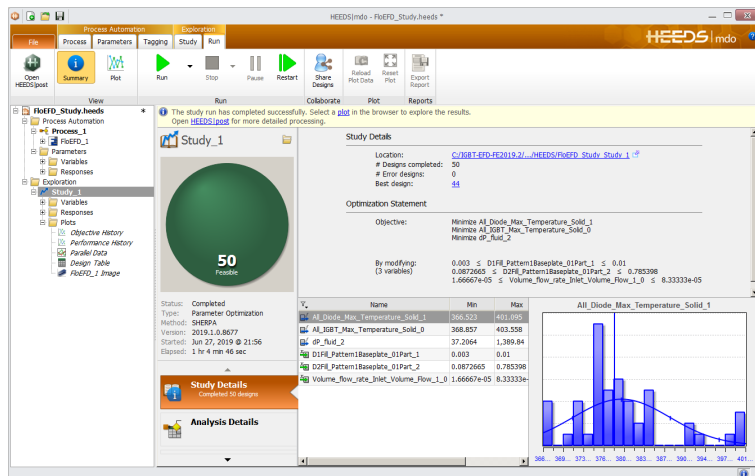


A multi-parameter geometry optimization of an IGBT power electronics liquid-cooled cold plate design helped reduce pressure loss and maximum temperature.

Simcenter FLOEFD Extended Design Exploration module

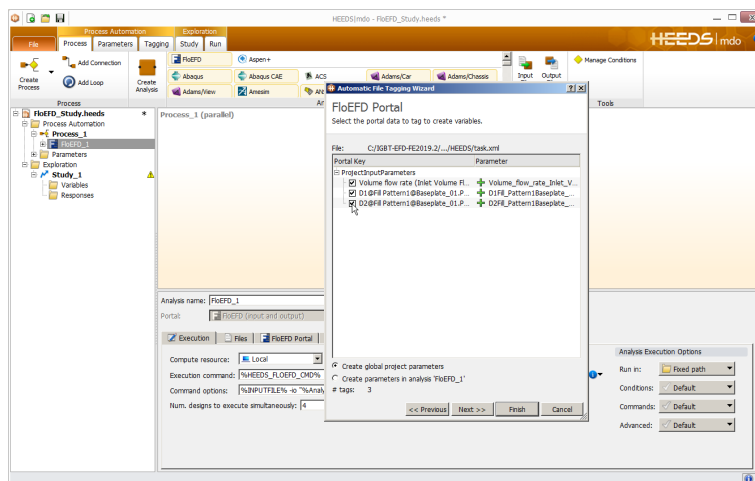


adapts the search as it learns more about the design space. It doesn't require specialized algorithmic search expertise and incorporates user intuition through its collaborative search capabilities. The process allows you to identify higher-performing families of designs with minimal simulation time and cost.



Siemens Digital Industries Software
[siemens.com/plm](https://www.siemens.com/plm)

Americas +1 314 264 8499
 Europe +44 (0) 1276 413200
 Asia-Pacific +852 2230 3333



Restricted © Siemens 2020. Siemens and the Siemens logo are registered trademarks of Siemens AG. Femap, HEEDS, Simcenter, Simcenter 3D, Simcenter Amesim, Simcenter FLOEFD, Simcenter Flomaster, Simcenter Flotherm, Simcenter MAGNET, Simcenter Motorsolve, Simcenter Samcef, Simcenter SCADAS, Simcenter STAR-CCM+, Simcenter Soundbrush, Simcenter Sound Camera, Simcenter Testlab, Simcenter Testxpress and STAR-CD are trademarks or registered trademarks of Siemens Product Lifecycle Management Software Inc. or its subsidiaries or affiliates in the United States and in other countries. All other trademarks, registered trademarks or service marks belong to their respective holders.
 78133-C4 7/19 M