



How to Transfer Allegro PCB  
Drawing to FloTHERM 10

# Index

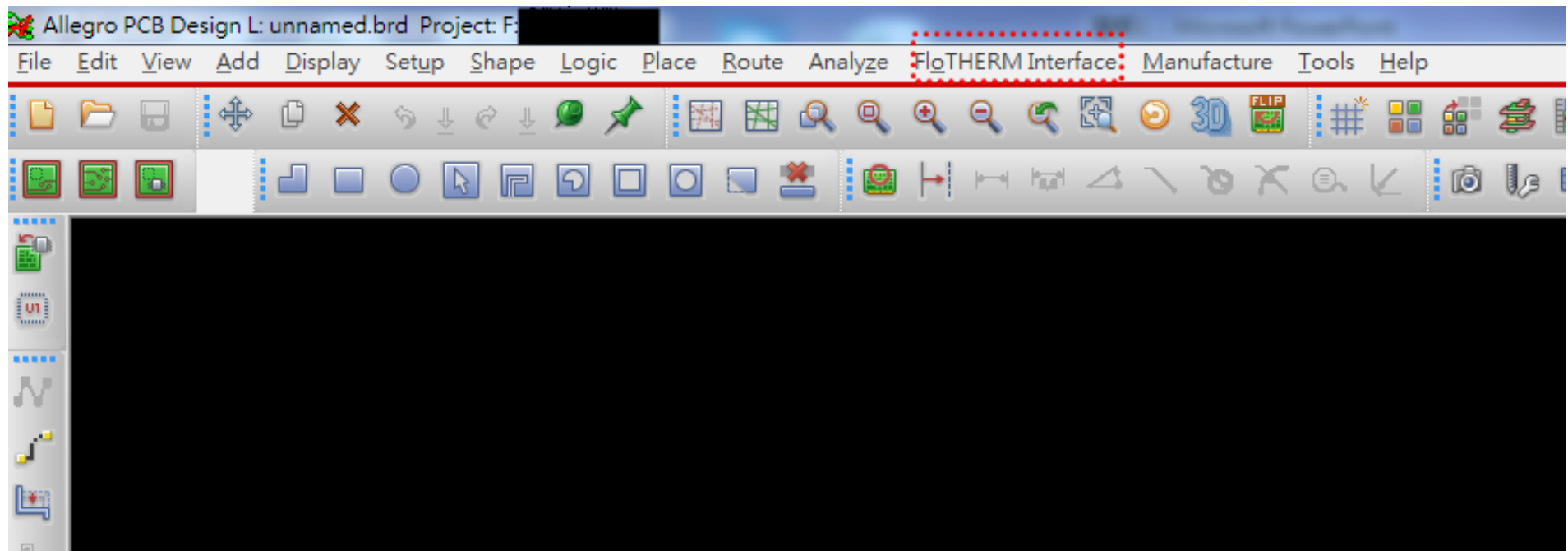


1. Step by step to know how to transfer Allegro file to FloTHERM 10
2. Check each components location and dimension accuracy between Allegro and FloTHERM
3. Open up on the Visual Editor

# FloTHERM interface



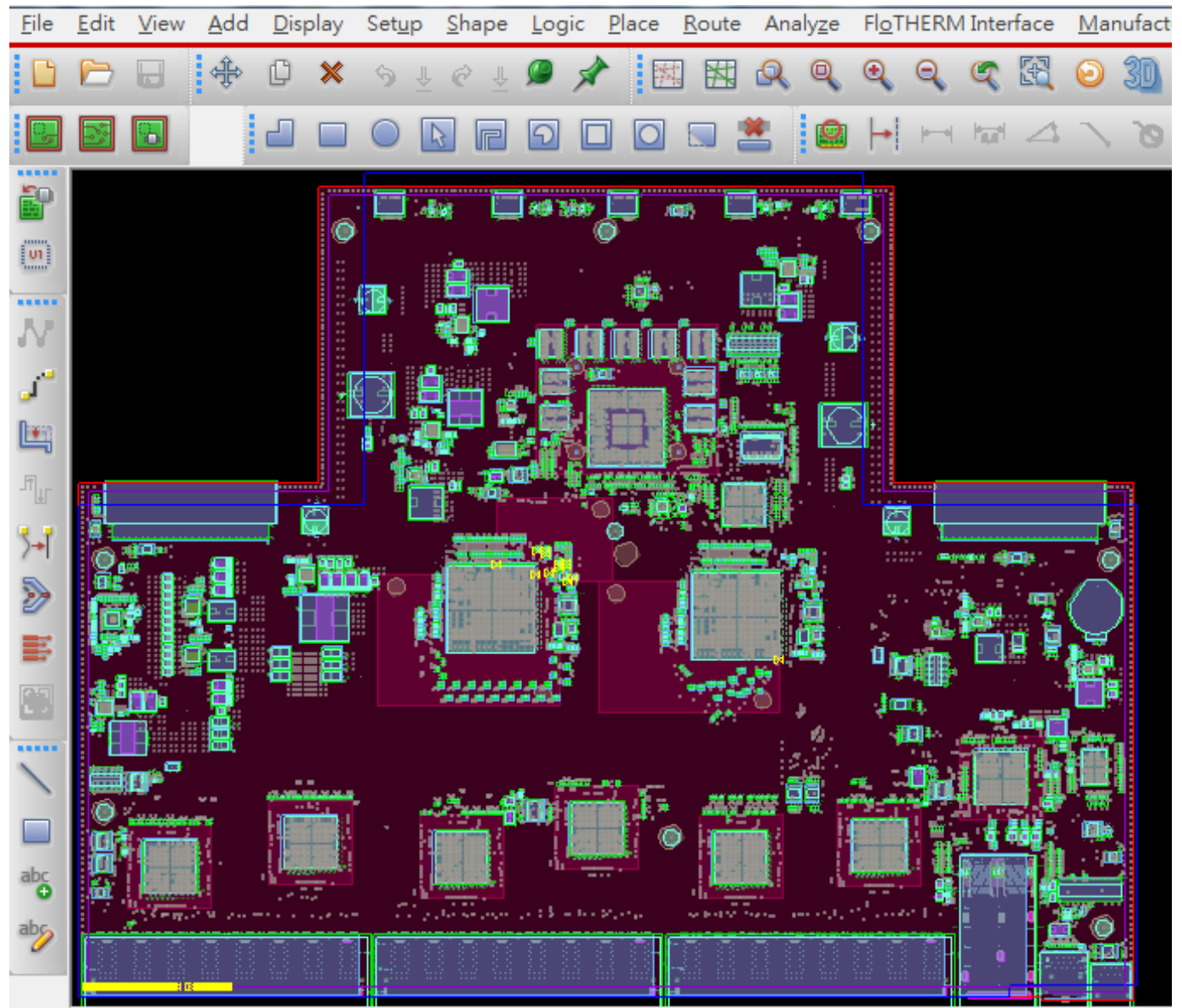
- ✧ Flotherm have been release interface base on Allegro v16.3  
After interface installation, we can see the icon on the top column.



# FloTHERM interface



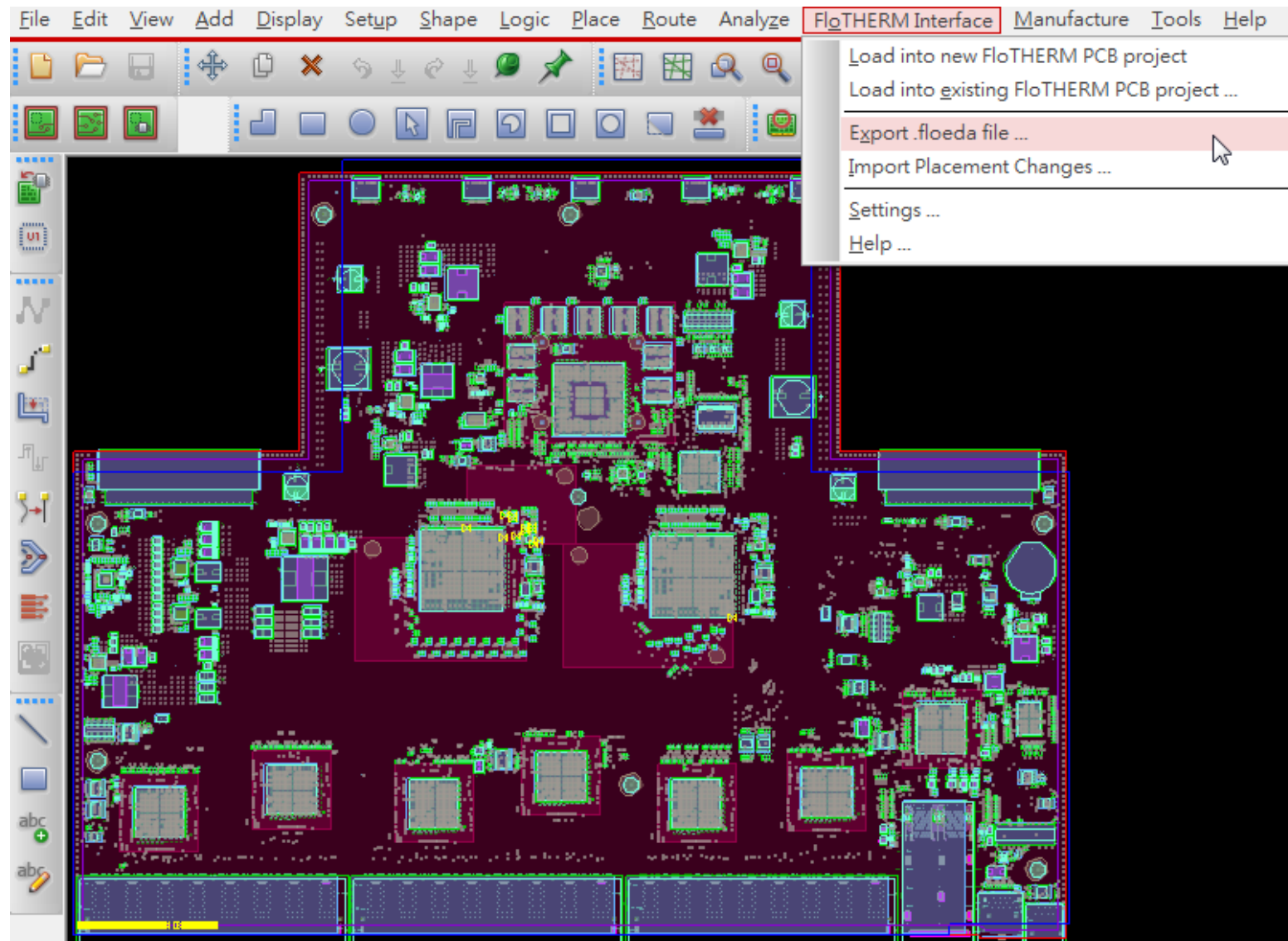
✎ We can input the top side drawing on the Allegro, Film:XXX\_L1. (The top side drawing). Only reserve the main components location and dimension .



# FloTHERM interface



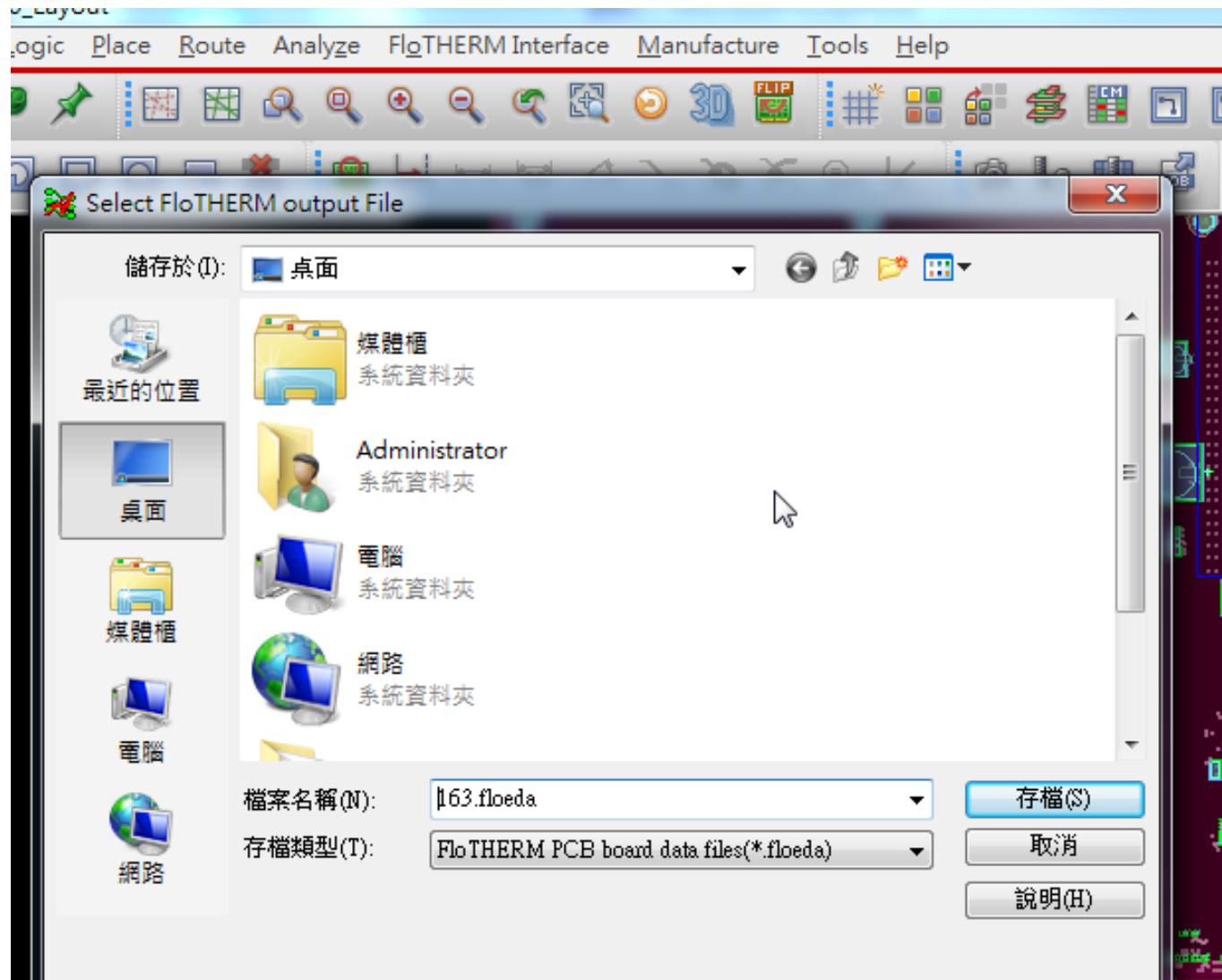
## Export .floeda file



# FloEDA data export



- Save to the .FloEDA file (FloTHERM PCB board data files)

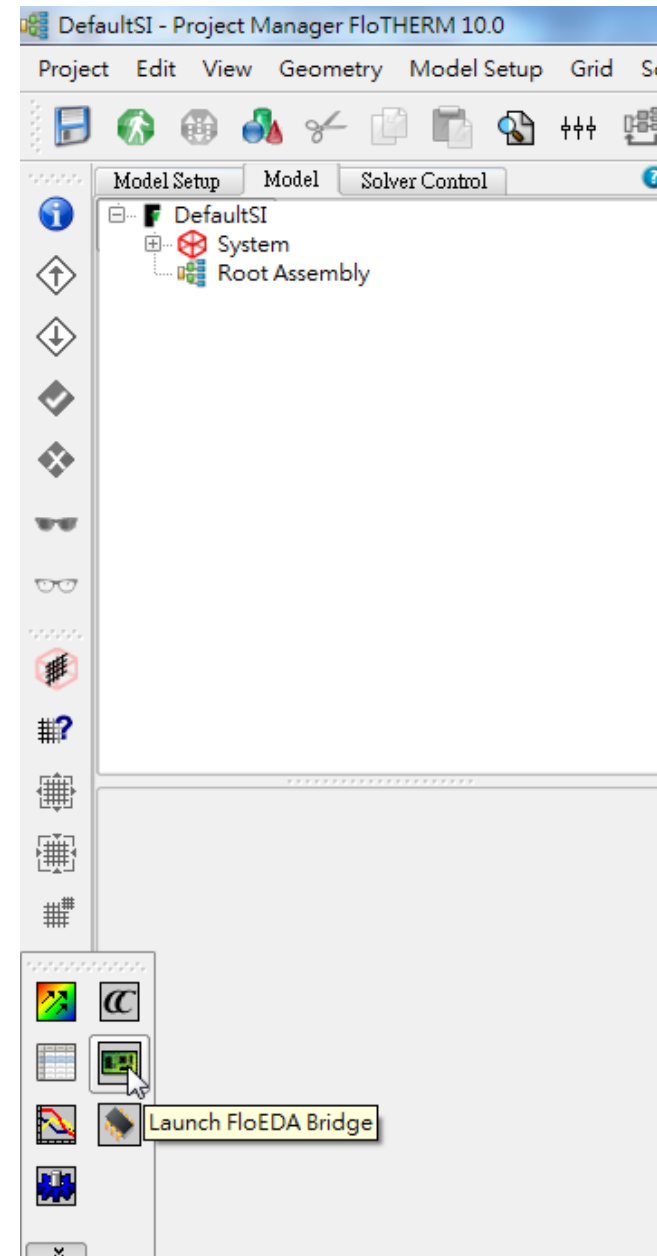




# FloEDA data import



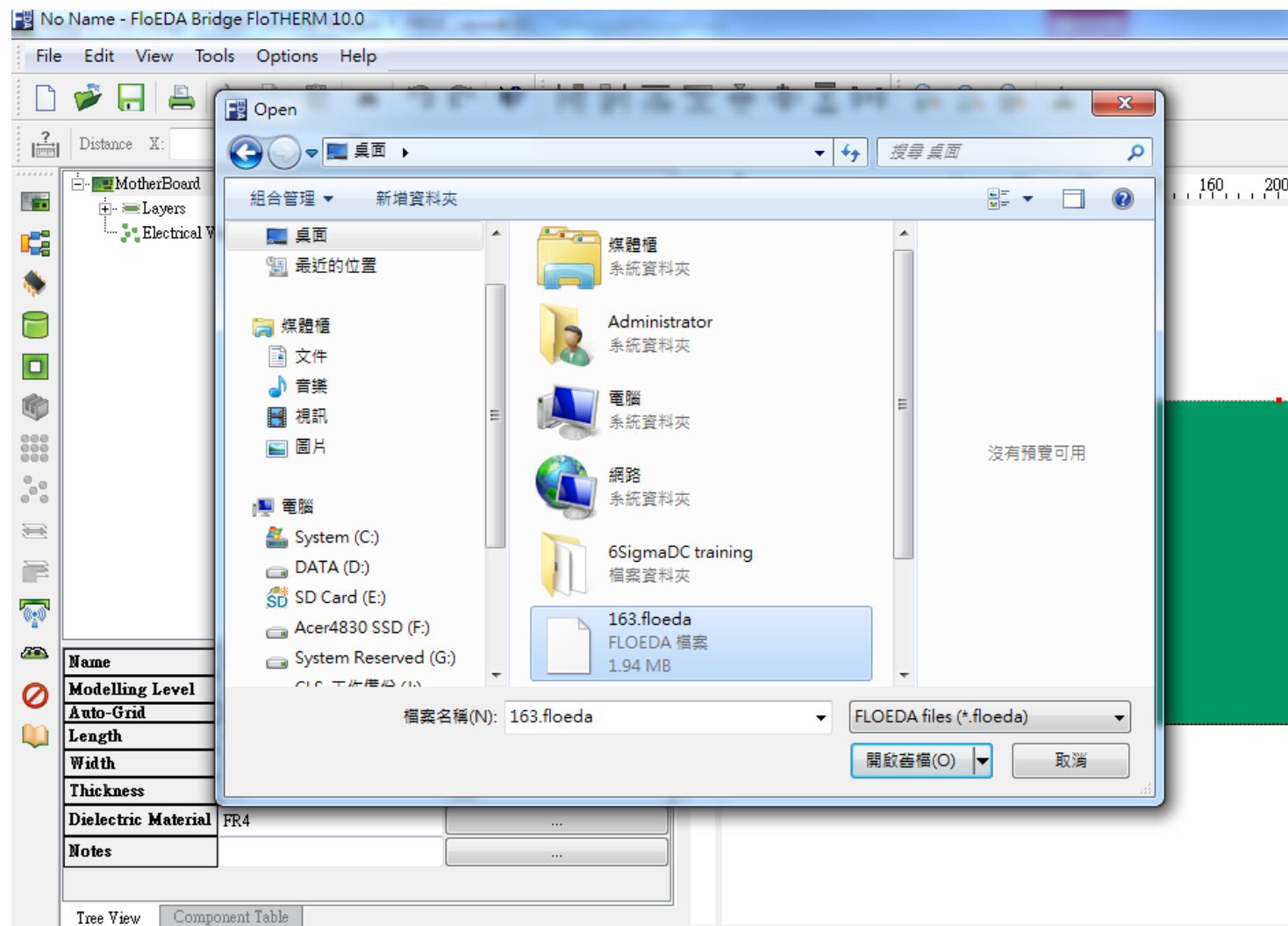
- Open the FloTHERM Software and launch FloEDA Bridge



# FloEDA data import



Input the .floeda file

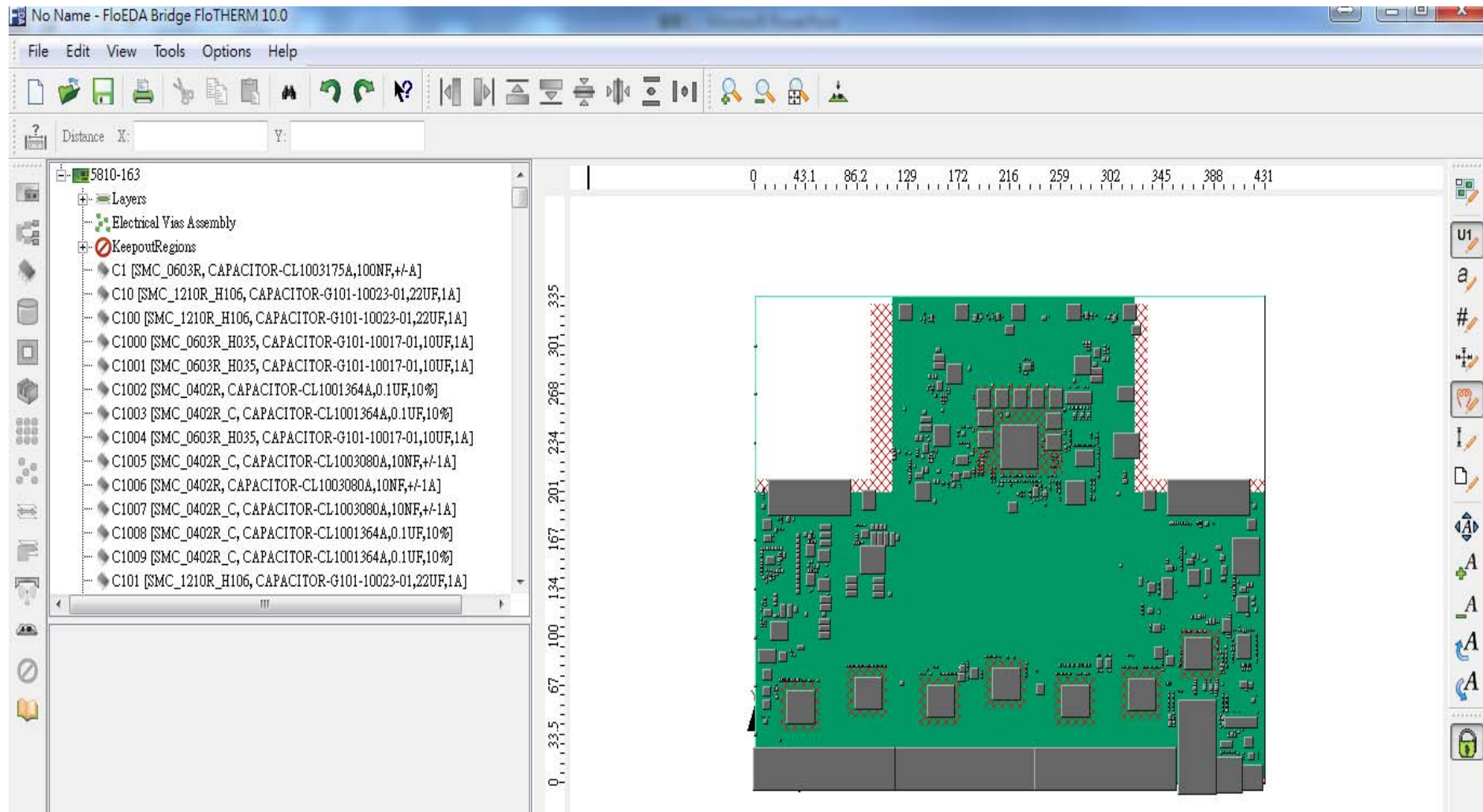




# FloEDA data import

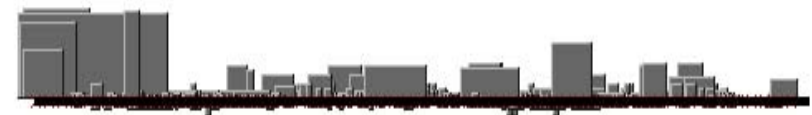
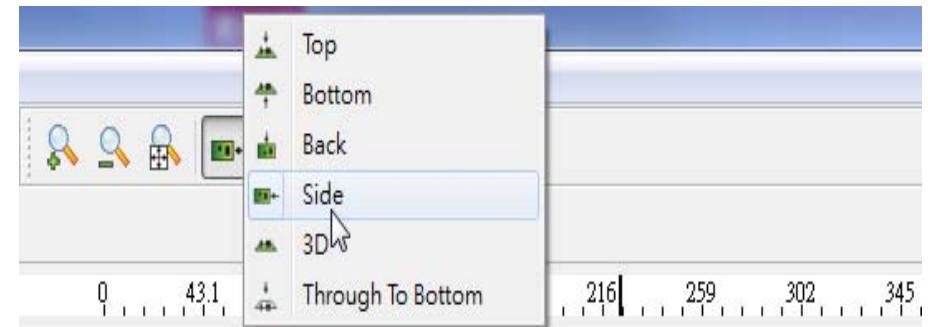
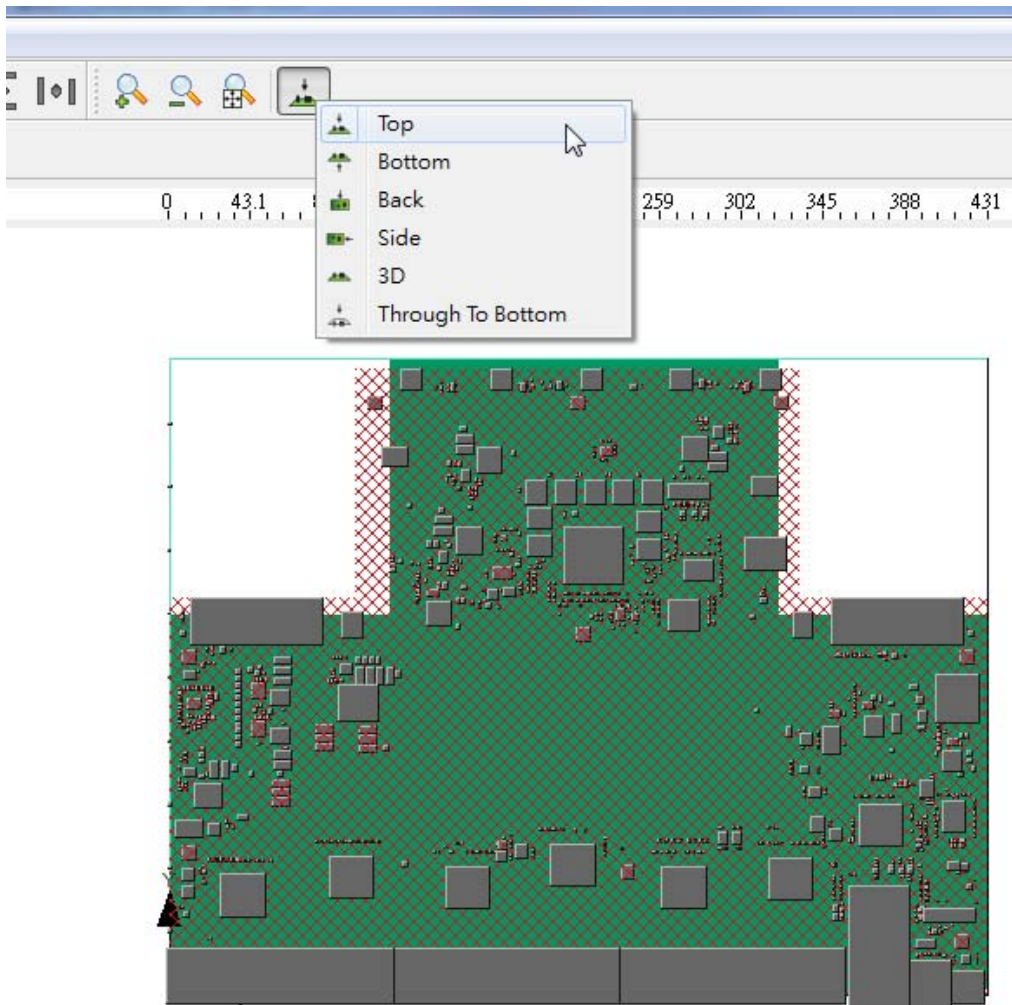


## Transfer to FloEDA.Bridge from Allegro



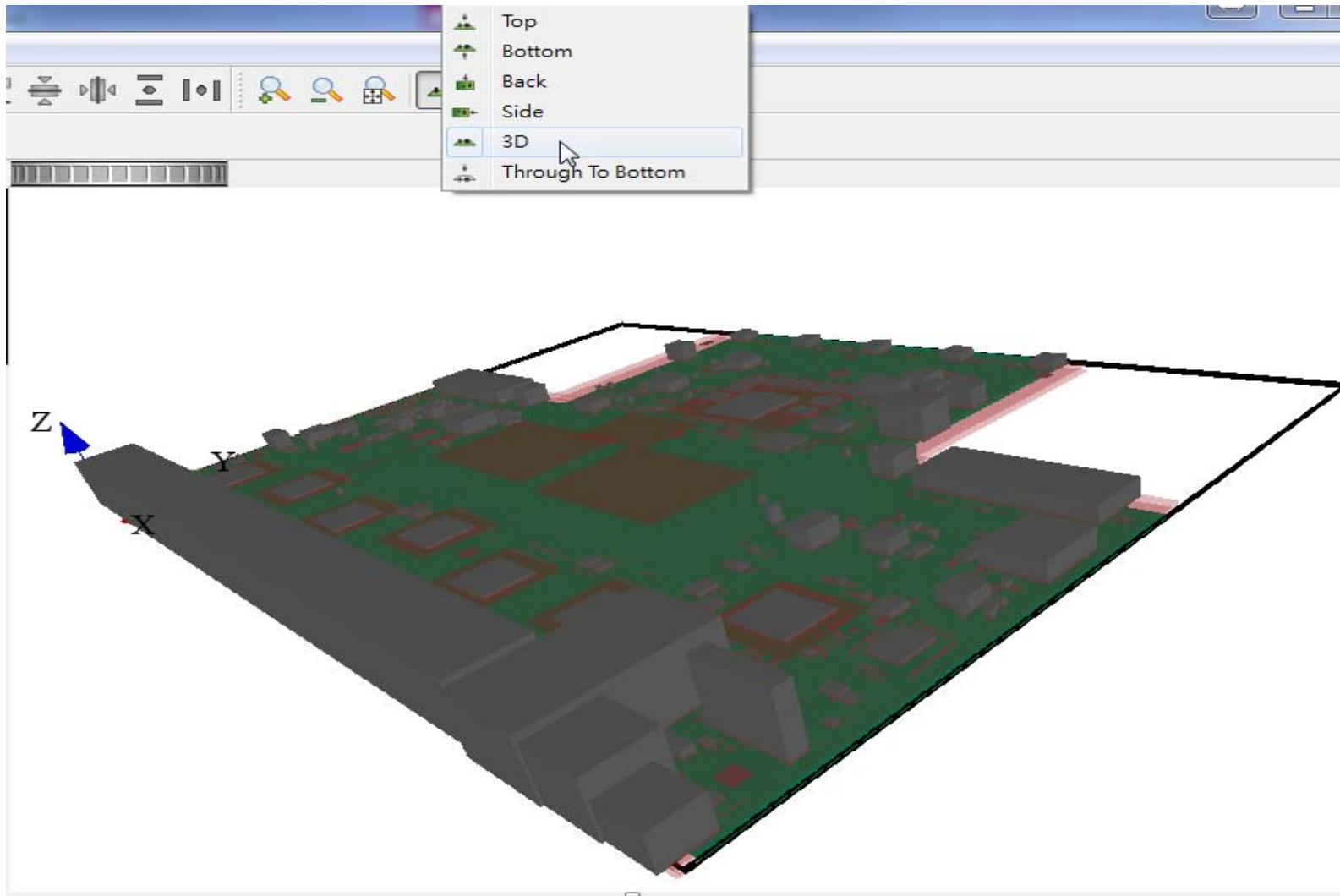
# FloEDA data import

∞ Different view for PCB transfer

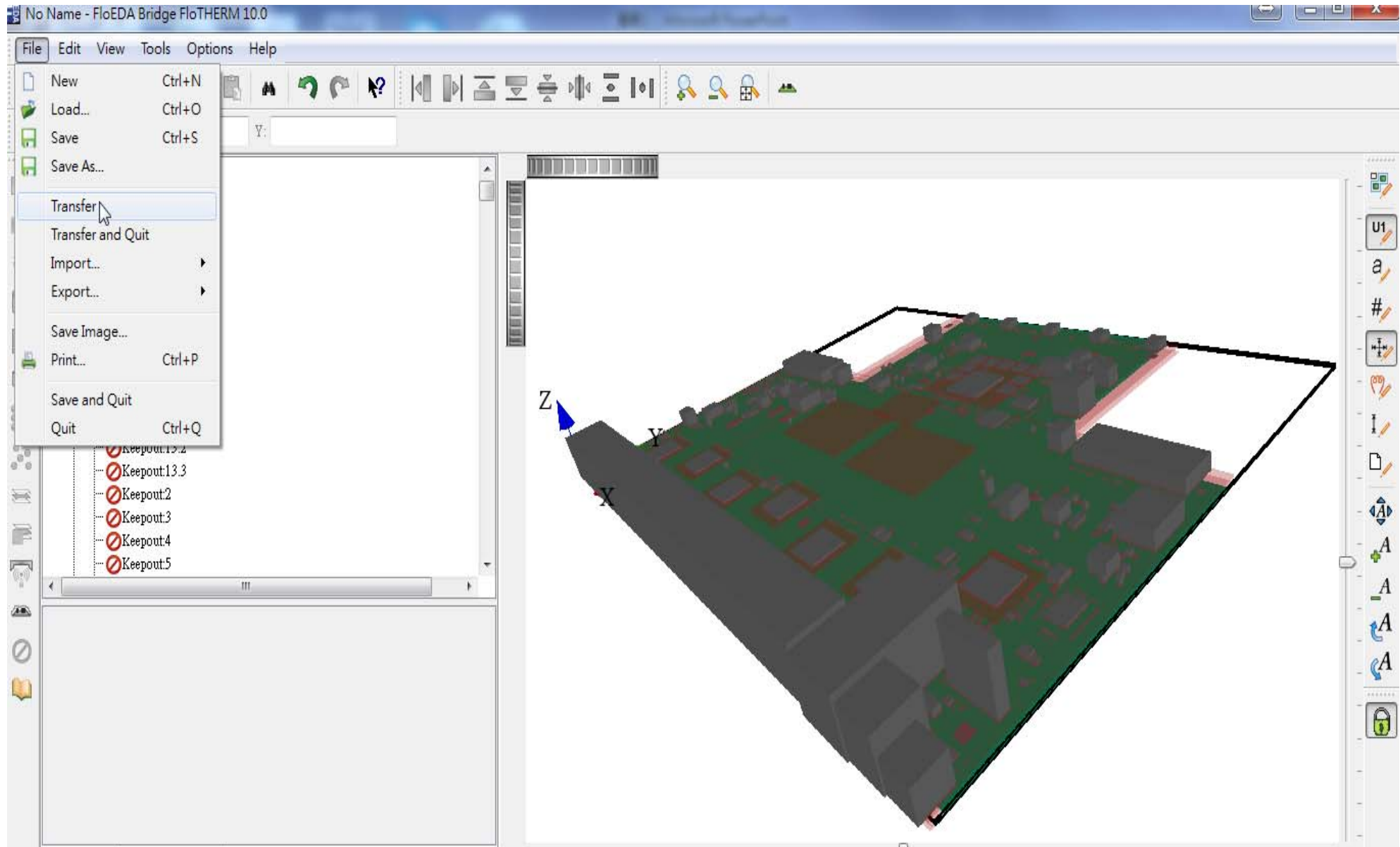


# FloEDA data import

- 3D view, Components have individual dimension and size.(Strength point)

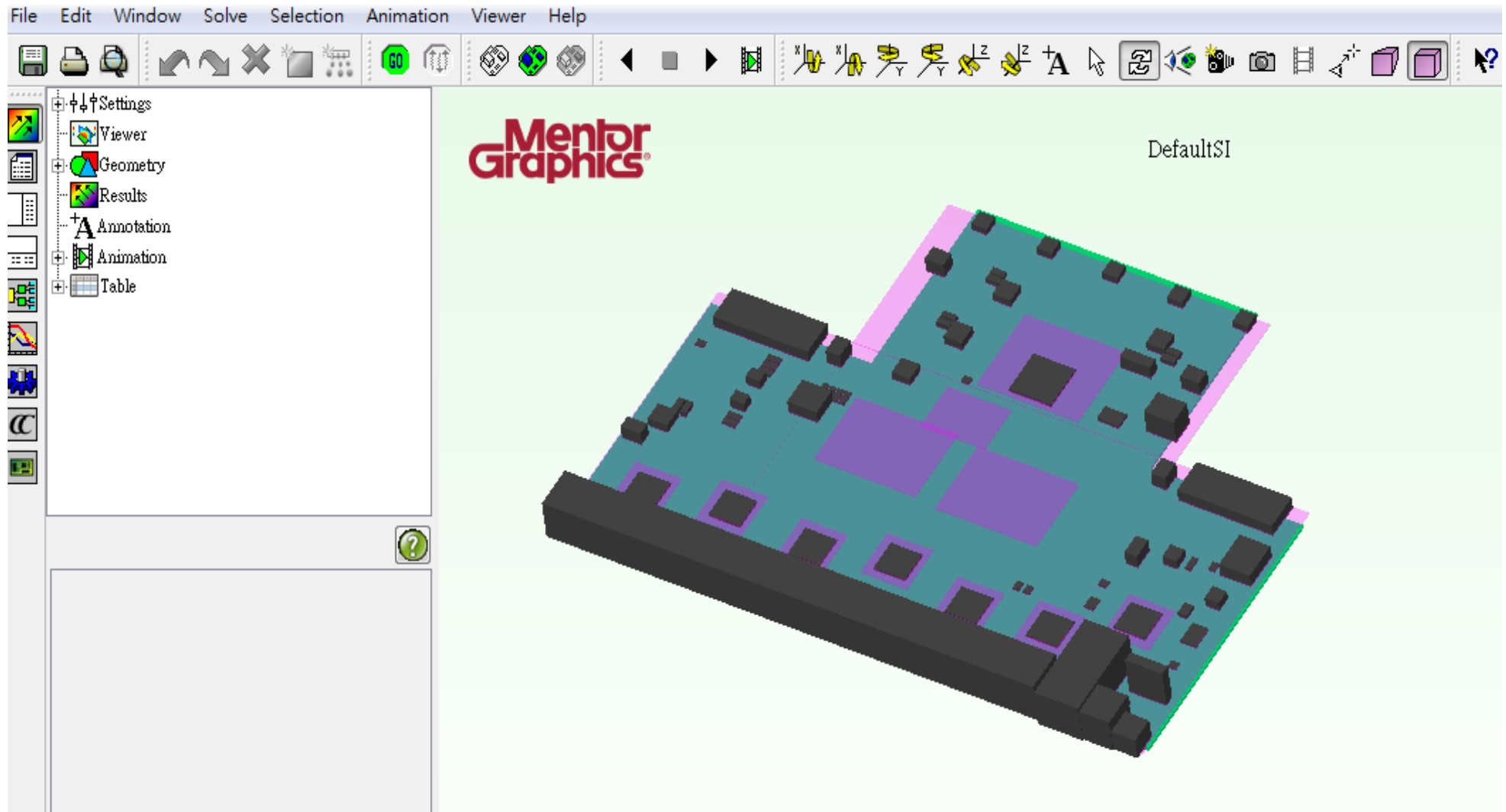


# Transfer to FloTHERM





# Transfer to FloTHERM



# Summary



- ✎ We can install FloTHERM interface add-on module into Allegro PCB Designer v16.3
- ✎ We can transfer Allegro PCB drawing to FloTHERM by .floeda data
- ✎ We can also install FloTHERM interface add-on module into the following software :
  - Allegro Package Designer
  - Board Station
  - Zuken CR-5000 Board Designer
  - Expedition

# 聯絡我們



- 易富迪科技有限公司
- 台北市松山區南京東路三段 305 號 5F
- 電話：+886-2-87724131
- 傳真：+886-2-27173122
- 網站：[www.efd.com.tw](http://www.efd.com.tw)
- 客服信箱：[CSD@efd.com.tw](mailto:CSD@efd.com.tw)

